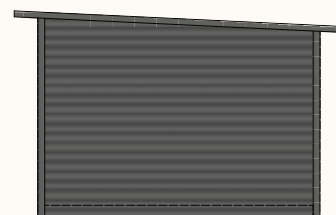
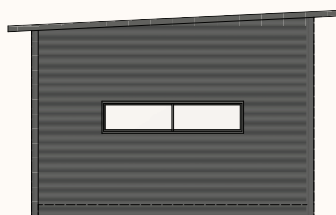
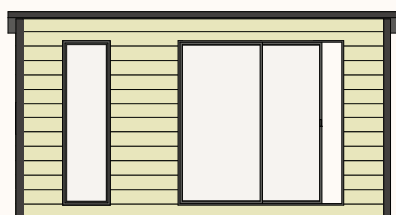




Summer House

The Summer House is one of our brand new designs and comes as an off-the-shelf kit. This non-customisable option provides the same stunning looks as our cedar designs but is finished in Shadowcladd pre-primed timber and hardy iron, which makes The Summer House a cost-effective, fast and easy option for your backyard room. Watertight doors and windows are fitted as standard, so simply choose the size that suits your needs.



Standard Inclusions

Structure

- Engineered timber floor system
- Shadowclad™ Treated Plywood system (FSC Certified) cladding to front elevation
- Colourbond steel to the sides and back
- Fully insulated roof panel system
- Particle board flooring
- Hardwood front entrance step

Doors & Windows

- Aluminium door and window frames
- Single Glazing on all windows and doors - fly screens to windows only
- 2 x horizontal awning windows†
- 1 x fixed vertical corner window
- 1 x sliding front door

† Window sizes/numbers vary to suit floor plan.

inoutside

www.inoutside.com.au

Summer House Floor Plan Variations

All our floor plan designs can be reversed to match in with your existing home and yard.

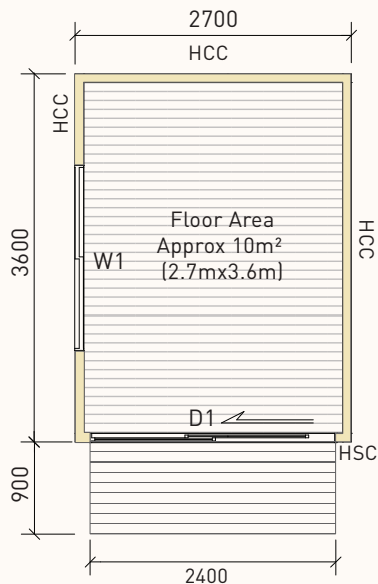
D1: Sliding door

W1: Awning desk height horizontal window

FW1 & 2: Fixed vertical window

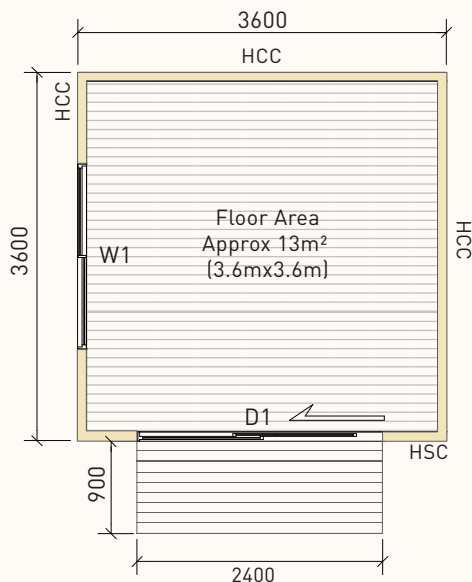
HCC: Horizontal Colourbond Cladding

HSC: Horizontal Shadowclad™ Cladding



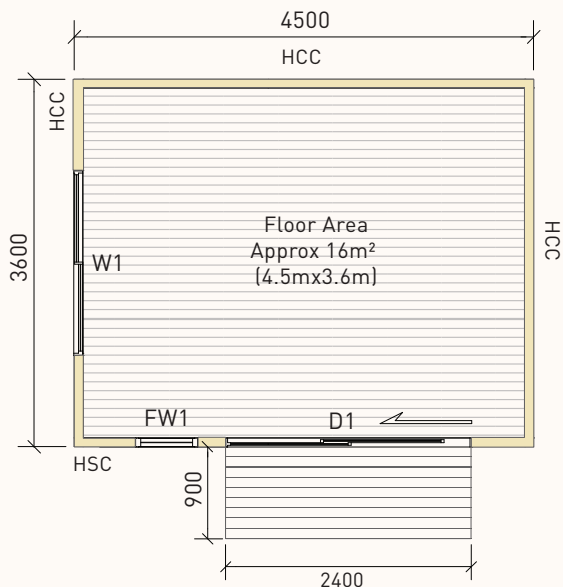
10m²

D1: 2420 x 2110
W1: 1810 x 410



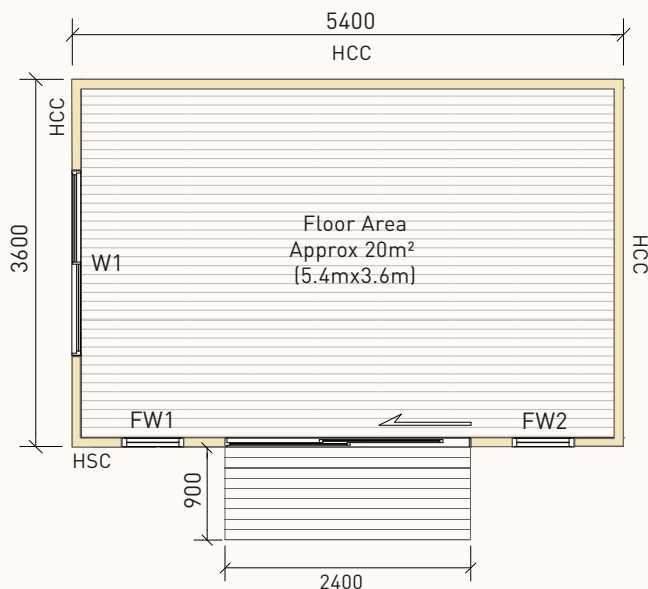
13m²

D1: 2420 x 2110
W1: 1810 x 410



16m²

D1: 2420 x 2110
W1: 1810 x 410
FW1: 610 x 2110



20m²

D1: 2420 x 2420
W1: 1810 x 410
FW1&2: 610 x 2110